



W
Bb
Basketball

2005-06 PREVIEW



20
06

MARYLAND

27
SPORTS1
TEAM

SEASON OUTLOOK

In her first three seasons, head coach Brenda Frese has led Maryland from a lower-tier team in the ACC to one of the elite teams in the nation, earning a final top 25 ranking in the ESPN/USA Today Coaches Poll last season for the first time in 12 years. She also guided the Terps to consecutive trips to the semifinals of the ACC Tournament, while also reaching the NCAA Tournament second round for the second-straight year, a feat which had not happened since the 1991-92 and 1992-93 seasons.

It is no surprise the Terps have received high praise during the preseason. A roster containing one ACC Rookie of the Year, one Honorable Mention All-American, three All-ACC performers, four gold medalists, two international Most Valuable Players, three-straight top 10 recruiting classes – including two consecutive top-five classes – and six high school All-Americans, Maryland is stacked with talent and ready to take the next step.

Earning as high as a No. 7 early preseason ranking, the Terps return nine letterwinners, including four starters. Among the returnees are Kodak/WBCA Honorable Mention All-American Shay Doron and last season's ACC's Rookie of the Year Crystal Langhorne. Both are preseason candidates

summer playing with the USA Under-19 World Championship Team, and Kristi Toliver have earned high praise in their high school careers and were ranked the fourth-best recruiting class in the nation.

"We have the best situation ahead of us this season if we can remain healthy. We have more depth than we've had since we've been here," said Frese. "But we have to be an unselfish team and play solid defense. We've obviously got a tremendous amount of scorers and talent with six high school All-Americans. We feel like if we can get our defensive game to the level of our offensive game, we're going to be a tremendous team."

The experiences of Coleman, Doron and Langhorne playing internationally this summer will also bring another new facet to the team.

"With Crystal, Shay and Marissa having played at the highest level of competition this summer, the level of this team has raised to new heights and it just makes us a better team," Frese commented.

With so much talent and depth at most positions, the burden of carrying the team will not fall to any one or two players. Faced with the most challenging schedule since

Frese arrived at Maryland, the challenge will be for this young but experienced team to play as a cohesive unit on both sides of the ball and remain healthy.

GUARDS

Versatility and depth were two things Coach Frese did not have much of in the past at the guard positions. This season, however, the Terps not only have those two things, but also have a very experienced core.

"Between our returning players and the addition of our two incoming freshman, we have a lot of options and depth at the guard positions," Frese said. "Each of them can defend and score and we'll be able to put different combinations on the floor depending on the situation."

Junior Shay Doron had one of the best seasons in school history, averaging 17.6 points per game while breaking the school single-season free throw record for the second-straight year, earning Kodak/WBCA Honorable Mention All-American honors and first team All-ACC nods. The guard with dual citizenship in Israel and the United States followed up helping the Israeli National Team win the Division B European Championship trophy, the country's first-ever international

"WE HAVE TO BE AN UNSELFISH TEAM AND PLAY SOLID DEFENSE. WE'VE OBVIOUSLY GOT A TREMENDOUS AMOUNT OF SCORERS AND TALENT WITH SIX HIGH SCHOOL ALL-AMERICANS. WE FEEL LIKE IF WE CAN GET OUR DEFENSIVE GAME TO THE LEVEL OF OUR OFFENSIVE GAME, WE'RE GOING TO BE A TREMENDOUS TEAM."
- BRENDA FRESE

for the John R. Wooden Award and the Wade Trophy, given to women's basketball's national player of the year. After Doron and Langhorne set numerous records during the 2004-05, they spent the summer playing internationally where both not only won a pair of gold medals, but were also named Most Valuable Players at international tournaments. Each has come back vastly improved and their experiences playing at an elite level has pushed their Terrapin teammates to raise their level of play to compete at a higher level.

"First and foremost, Crystal and Shay both had tremendous summers – the gold medals and being named MVP. They gained a wealth of experience which is going to help them in terms of their leadership of this team," said Frese. "Both are much more outspoken this year. When your hardest workers are also your vocal leaders, you've got tremendous captains. I think they're going to do an outstanding job, not only on the court but off the court, as well."

Also returning are junior Kalika France, an All-ACC honorable mention as a freshman and a two-year starter, and sophomore Jade Perry, who replaced classmate Laura Harper in the starting lineup when Harper went down with an Achilles injury in late December.

Last season, the injury bug struck the Terps in a big way, beginning with Harper, who started the first nine games of the season and was named ACC Rookie of the Week after a career performance against eventual Final Four-participant LSU. France battled with tendonitis for most of the season and junior Aurelie Noirez also missed some playing time due to various ailments.

The Terps welcome another highly-touted recruiting class who are coming in looking to make an immediate impact. Freshman Marissa Coleman, who won a gold medal this



Shay Doron

title in a women's sport, and the USA capture gold at the Maccabi Games, en route to being named Most Valuable Player at both tournaments. Her experiences this summer have made her an even stronger candidate for the Wooden and Wade National Player of the Year awards.

Junior Kalika France, along with Doron, was also called upon to step in right away and help carry the load of the team when she was a freshman. She has started every game but one in her first two seasons as a Terrapin. And despite battling through severe tendonitis in both knees throughout most of last season, was the team's top defender and third-leading scorer.

Sophomore Ashleigh Newman saw extensive playing time last season and proved to be one of the league's top three-point threats. She had a career night knocking down seven treys in one half at Clemson and was ranked among the top 10 in the ACC in three-point shooting, while also handling the back-up point guard duties with Doron.

Senior Charmaine Carr made a position change last season, going from the post to the swing position giving the Terps added depth at the guard spots while also providing height and a tough matchup for opponents. She also gave Maryland a defensive spark off the bench, which saw her minutes increase over the course of the year.

Freshmen Marissa Coleman and Kristi Toliver are two of the nation's top newcomers, coming to College Park with high accolades. Both were named McDonald's and WBCA All-Americans, as well as, earning national honors from many other national publications. Toliver will have the bigger challenge on her hands taking over the team's point guard duties from departed senior Anesia Smith, but Frese is confident she'll be able to handle it.

"Kristi is going to be our point guard this season," said Frese. "She's going to direct this team and push tempo. Offensively, she can break people down off the dribble and shoot the three. The thing I love about Kristi, she's a competitor, she's a winner and she's extremely unselfish."

While there is an element of unknown because of her inexperience at the collegiate level, Frese has no doubt that Toliver will be up for the challenge. Toliver has grown up around the game of basketball. Her older sister was a four-year letterwinner at Lehigh and her father is an NBA official, so her knowledge of the game is vast. Toliver can not only distribute the ball, but has the leadership abilities to run the floor and is a scoring threat.

While only a freshman, Coleman has plenty of experience playing at a high level. She spent the last two summers playing with the country's top collegians as a member of the Under-19 USA Basketball team where she was a teammate of Laura Harper in 2004 and Crystal Langhorne this past summer. A guard/forward, the *Washington Post's* Metro Player of the Year presents matchup problems, as she can rebound and score and has the skills to challenge for a starting position.

Also joining the Terps is sophomore Christie Marrone, a transfer out of Virginia Tech. Though she will have to sit out the 2005-06 campaign due to NCAA transfer rules, her experience playing one season in the ACC will be an asset to the team in practice.

POSTS

Every post player returns this season, as the Terps boast plenty of talent, depth and an experience core.

"We are fortunate to have a talented group of post players returning this season," said Frese. "Crystal improves every time she's on the floor. Her experience with the USA team has been valuable not only to her development, but also to the rest of the team. Crystal, along with the other posts, are relentless workers and tough on offense and on the glass."

Leading the way is ACC Rookie of the Year Crystal Langhorne, who had a remarkable freshman campaign breaking every freshman class school record while also posting one of the best seasons in school history. She continued to elevate her game over the summer, playing with the nation's elite Under-19 players, eventually being named Most Valuable Player at the U19 FIBA World Championship to go along with two gold medals. A tri-captain on the USA squad, she took on plenty of the load left behind by the sudden injury of teammate Laura Harper and went on to be the only player in the ACC to average a double-double, leading the conference in rebounding while also ranking among the top 10 in scoring.

With the return of Harper, who is scheduled to be at full strength once official practices begin, and the addition of sophomore Jade Perry into the mix, who stepped into a starting role after Harper ruptured her Achilles tendon and is playing with confidence, defenses will not be able to focus just on Langhorne.

Harper's much-anticipated return to the court is ahead of schedule and is expected to be ready come the season's opening tip-off on Nov. 18. One of the team's hardest workers, she put that work ethic into her rehabilitation and is eager to hit the ground running.

Perry was thrust into the starting lineup last season and has returned as the team's most improved player, according



Crystal Langhorne

to Frese. A big presence in the post and a tough defender, winning numerous battles down low against some of the top post players in the nation, her confidence is at an all-time high.

Junior Aurelie Noirez has established herself as a reliable post player who can hit the mid-range jumper. She returns in better shape and continues to challenge her teammates and opponents with her hard work.

Senior Angel Ross is one of two seniors on the team and will be looked to to provide leadership. She suffered a knee injury during the offseason which required surgery and has spent most of the summer rehabilitating and trying to get back on the court.

Freshman Marissa Coleman and senior Charmaine Carr will also add depth and versatility to the post positions. The guard/forwards have the size, quickness and speed and are relentless on the boards.

"I can't say enough about how determined these players are," said Frese. "Crystal continues to build on an outstanding freshman campaign and the return of Laura gives us a tremendous boost. She has approached her rehab with the same hard work she gives us in practice. Jade has become a very confident player and is finally beginning to use the strength and skills we knew she had. Add Aurelie, Charmaine and Marissa and we have any number of players we can turn to."

Frese added, "This team has come back ready to work and determined to take this team to new heights. The addition of our newcomers makes us an even bigger threat to battle for an ACC title and make a run at a national championship. I'm excited for what this season is going to bring."

SCHEDULE

Head Coach Brenda Frese faces the toughest slate since she arrived four years ago. With the addition of Boston College to the ACC, completing the expansion of the league, Maryland's schedule features 14 games against 11 NCAA Tournament teams, and three more games versus teams that played in the WNIT.

Five-time defending Metro Atlantic Athletic Conference regular season champion Siena hosts the Terps for the season opener on Nov. 18. Maryland then comes home to tip-off the home slate with the Atlantic 10's Xavier Nov. 20. Last season, the Terps battled the Musketeers down to the wire with the Terrapins coming out on top.

Those two games will be all the preparation Maryland will have before heading to the U.S. Virgin Islands for the Paradise Jam over the Thanksgiving holiday. The Terps open the three-day event against WAC Champion Gonzaga, before taking on NCAA finalist Michigan State, followed by Final Four participant Tennessee.

"Our trip to the Virgin Islands will show us where we're at early in the season," said Frese. "We felt, with the goals we've set for ourselves, it was time to step up our schedule. Playing these high-caliber teams will better prepare us for the battles in the ACC and postseason play. There is no doubt that the Paradise Jam will certainly pair us against the nation's elite competition."

Maryland returns home to play seven of its nine games in the friendly confines of Comcast Center, including NCAA Tournament teams Arizona on Dec. 11 and Coppin State on Dec. 13, while also hosting the annual Terrapin Classic, Dec. 29 and 30. The Wildcats will be looking to avenge an overtime loss on their home court last season.

After opening the month of January hosting Manhattan, the Terps open the ACC schedule against five-straight teams that reached the NCAA Tournament. Maryland travels to face newcomers BC on Jan. 5. It will be the first-ever meeting between the teams.

Maryland then plays back-to-back home games against Duke and Florida State. The meeting with the Blue Devils will be the first game of the home-and-home series, while the Terps will be looking to take advantage of the home court vs. the Seminoles in the only meeting between the teams on Jan. 16.

Virginia and Virginia Tech will host the Terrapins on Jan. 20 and 23. The long-time rivalry between the Terps and the Cavaliers is sure to live up to expectations in the first of two regular season meetings, while Maryland is looking for its first win in Blacksburg, Va., since 2000.

The Terps play Georgia Tech (Jan. 26) and Miami (Feb. 1) in College Park, while traveling to WNIT participant Wake Forest on Jan. 29 for the only regular-season meeting with those teams. Maryland will be in the thick of the ACC schedule when it closes out the regular-season series with UVA on Feb. 5, followed by trips to ACC Champion North Carolina (Feb. 9) and Duke (Feb. 13) for the annual ESPN2 battle.

Boston College visits College Park for the first time on Feb. 16. Maryland makes its final regular season road trip when it goes to NC State (Feb. 19), then home games vs. Clemson and Northern Colorado cap the regular season.

The ACC Tournament will once again take place at the Greensboro Coliseum, March 2-5. The Terps will be looking to make their third-consecutive appearance in the NCAA Tournament when it kicks off March 18.

"It's going to be an exciting season. Our team and the coaching staff have done a lot of preparation in the offseason, and will continue to prepare as the preseason approaches, to take this team to the next level and make a strong threat for the ACC and NCAA titles."

20
06

MARYLAND

27
SPORTS1
TEAM

PRESEASON NOTEBOOK

DORON, LANGHORNE PRESEASON PLAYER OF THE YEAR CANDIDATES

Junior Shay Doron and sophomore Crystal Langhorne were named preseason candidates for two major National Player of the Year awards. Both are among the nation's top preseason candidates for the prestigious Wooden Award, making Maryland one of just six schools with two candidates on the list.

Doron and Langhorne were also named to the Women's Basketball Coaches Association's State Farm Wade Trophy Watch List. The award is considered the Heisman Trophy of women's basketball. Only three schools, including Maryland, has two players named to the 20-player preseason list.

The ACC leads all conferences with the most candidates, with seven players named to each list.



All six were also named Gatorade Players of the Year for their home state at least once. Doron (N.Y.), Langhorne (N.J.) and Coleman (Washington, D.C.) each earned the honor twice.

WHO'S BACK

The Terps welcome back nine letterwinners, including four starters, from last season's team which posted a 22-10 record and advanced to the second round of the NCAA Tournament. The ACC's Rookie of the Year, Crystal Langhorne, had a summer to remember traveling to Hungary and Tunisia with the USA Under-19 Basketball Team. Kodak/WBCA All-American and first team All-ACC performer, Shay Doron also had an impressive summer, winning gold medals with the Israeli National team and the Maccabi Games USA squad.

Starting in all but one game last year, junior Kalika France spent the summer nursing her knees back to health and sophomore Jade Perry, who stepped into a starting role after the season-ending injury to Laura Harper, also returns.

A sophomore, Harper has also been rehabilitating after an Achilles tendon rupture in December of 2004 and is eager to return to the basketball court. Seniors Charmaine Carr and Angel Ross are the only two seniors on the squad. Carr saw increased playing time last year as a defensive replacement, while Ross also used her summer vacation to rehab an injured knee.

Sophomore Ashleigh Newman looks to become an even stronger perimeter threat, while junior Aurelie Noirez continues to flourish in her role as a back-up post player.

GOLDEN GIRLS

Junior Shay Doron, sophomore Crystal Langhorne and freshman Marissa Coleman each won two gold medals this summer. Doron helped the Israeli National Team to the Division B European Championship in Brno, Czech Republic to the country's first-ever women's international title. She then helped the USA capture gold at the Maccabi games in Israel. She was also named Most Valuable Player of both tournaments.

Coleman and Langhorne were members of the U-19 USA Basketball World Championship team. The team won gold and Sports International Invitational in San Diego. They both then stood on the gold-medal stand at the FIBA U19 World Championship in Tunis, Tunisia.

Langhorne, who was also named a tri-captain, earned MVP nods at the World Championship. She led the team in scoring with 16.6 points per game, shooting .775 from the field, and was second in rebounding averaging 6.4 rebounds per game.

Coleman was in her second stint with the U19 squad.

MARRONE TRANSFERS TO MARYLAND

Sophomore Christie Marrone, who played for Virginia Tech last season, transferred to Maryland during the summer. A Brooklyn, N.Y., native, she averaged 4.3 points per game, 1.5 assists per game and shot .359 from three-point land. Marrone will have to sit out the 2005-06 campaign due to NCAA transfer rules, but will become eligible in 2006-07 and has three seasons of eligibility remaining.

BEST OF THE BEST

Head coach Brenda Frese and her coaching staff hit the recruiting trails the moment they arrived on campus four years ago and their hard work is evident from this season's roster.

The 2005-06 Terrapin roster features six high school All-Americans. Shay Doron, a McDonald's and Parade All-American, and Kalika France, a Parade All-American, were the first class to sign on with Coach Frese. That class was ranked among the top 10 in the nation. Frese and her staff followed up by signing the No. 2 rated class in the nation, including McDonald's and Parade All-Americans Laura Harper and Crystal Langhorne. The incoming class of Marissa Coleman and Kristi Toliver, both McDonald's and Parade All-Americans, as well, was ranked No. 4 in the nation.



SECOND-STRAIGHT TOP-FIVE CLASS COMES TO COLLEGE PARK

For the third-consecutive year, head coach Brenda Frese has lured a top-10 ranked recruiting class and the second top-five ranked class in a row. This year's incoming class of guard/forward Marissa Coleman and guard Kristi Toliver was rated the fourth-best recruiting class in the nation according to the Blue Star Report.

Coleman and Toliver bring a number of high school accolades with them. They were both named McDonald's and WBCA All-Americans, earning a roster spot in both all-star games. Each was also named to the USA Today All-USA Basketball team, with Coleman being named to the first team and Toliver selected to the second team. Picked Gatorade Players of the Year for Washington, D.C., and Virginia, respectively, Coleman was the 2005 Washington Post Metro High School Player of the Year, while Toliver was the Daily News Record High School Player of the Year.

MARYLAND ON THE TUBE

The ACC announced the conference's television package this summer which included six TV appearances by the Terrapins. In January, the Terps play four-straight games on the conference's Regional Sports Network (Comcast SportsNet, Fox Sports Net South and Sun Sports) with two more games in February being televised. Both games against Duke will be on TV, including a nationally televised game on ESPN2.

The Terps also have three more television opportunities to play in front of the cameras at the ACC Tournament. Selected quarterfinal games will be televised on the regional sports network, while the semifinal and championship games are scheduled for a national telecast on Fox Sports Net.

Should Maryland earn its third-consecutive NCAA Tournament berth, the postseason event will once again be televised nationally on the ESPN family of networks.

MARYLAND TELEVISION SCHEDULE

Date	Opponent	Time	TV
Jan. 8	Duke	1 p.m.	RSN
Jan. 16	Florida State	4:30 p.m.	RSN
Jan. 20	at Virginia	7 p.m.	RSN
Jan. 23	at Virginia Tech	7 p.m.	RSN
Feb. 13	at Duke	7:30 p.m.	ESPN2
Feb. 19	at NC State	1 p.m.	RSN

ROSTER INFORMATION



NUMERICAL

NO.	NAME	POS.	CL.	HT.	HOMETOWN/HIGH SCHOOL
1	Crystal Langhorne	So.	6-2	C/F	Willingboro, N.J./Willingboro
11	Christie Marrone	So.	5-6	G	Brooklyn, N.Y./St. John Villa (Virginia Tech)
15	Laura Harper	So.	6-4	F/C	Elkins Park, Pa./Cheltenham
20	Marissa Coleman	Fr.	6-1	G/F	Cheltenham, Md./St. John's College (D.C.)
21	Ashleigh Newman	So.	5-10	G	Shelbyville, Tenn./Shelbyville Central
22	Shay Doron	Jr.	5-9	G	Great Neck, N.Y./Christ the King
24	Kalika France	Jr.	5-9	G	Forestville, Md./Bishop McNamara
25	Kristi Toliver	Fr.	5-7	G	Harrisonburg, Va./Harrisonburg
32	Charmaine Carr	Sr.	6-1	G/F	Accokeek, Md./Gwynn Park
40	Angel Ross	Sr.	6-2	F	Midlothian, Va./Midlothian
44	Aurelie Noirez	Jr.	6-3	C	Vandoevre, France/Lycée François Arago
55	Jade Perry	So.	6-1	F/C	Central City, Ky./Muhlenberg North

ALPHABETICAL

NO.	NAME	CL.	HT.	POS.	HOMETOWN/HIGH SCHOOL
32	Charmaine Carr	Sr.	6-1	G/F	Accokeek, Md./Gwynn Park
20	Marissa Coleman	Fr.	6-1	G/F	Cheltenham, Md./St. John's College (D.C.)
22	Shay Doron	Jr.	5-9	G	Great Neck, N.Y./Christ the King
24	Kalika France	Jr.	5-9	G	Forestville, Md./Bishop McNamara
15	Laura Harper	So.	6-4	F/C	Elkins Park, Pa./Cheltenham
1	Crystal Langhorne	So.	6-2	C/F	Willingboro, N.J./Willingboro
11	Christie Marrone	So.	5-6	G	Brooklyn, N.Y./St. John Villa (Virginia Tech)
21	Ashleigh Newman	So.	5-10	G	Shelbyville, Tenn./Shelbyville Central
44	Aurelie Noirez	Jr.	6-3	C	Vandoevre, France/Lycée François Arago
55	Jade Perry	So.	6-1	F/C	Central City, Ky./Muhlenberg North
40	Angel Ross	Sr.	6-2	F	Midlothian, Va./Midlothian
25	Kristi Toliver	Fr.	5-7	G	Harrisonburg, Va./Harrisonburg

COACHING STAFF

HEAD COACH: Brenda Frese (Arizona '93), 4th season

ASSISTANT COACH: Jeff Walz (Northern Kentucky '95), 4th season

ASSISTANT COACH: Erica Floyd (Ohio State '93), 4th season

ASSISTANT COACH: Joanna Bernabei (West Liberty '97), 3rd season

DIR. OF BASKETBALL OPERATIONS: Mark Pearson (Iowa State '96), 4th season

ROSTER BREAKDOWN TERPS BY CLASS

Seniors (2): Charmaine Carr, Angel Ross

Juniors (3): Shay Doron, Kalika France,
Aurelie Noirez

Sophomores (5): Laura Harper, Crystal Langhorne,
Christie Marrone, Jade Perry, Ashleigh Newman

Freshmen (2): Marissa Coleman, Kristi Toliver

TERPS BY POSITION

Guards (5): Charmaine Carr, Marissa Coleman, Shay
Doron, Kalika France, Christie Marrone, Ashleigh
Newman, Kristi Toliver

Forwards (6): Charmaine Carr, Marissa Coleman,
Laura Harper, Crystal Langhorne, Jade Perry,
Angel Ross

Centers (4): Laura Harper, Crystal Langhorne,
Aurelie Noirez, Jade Perry

TERPS BY HEIGHT

5-6 (1): Christie Marrone

5-7 (1): Kristi Toliver

5-9 (2): Shay Doron, Kalika France

5-10 (1): Ashleigh Newman

6-1 (3): Charmaine Carr, Marissa Coleman,
Jade Perry

6-2 (3): Crystal Langhorne, Aurelie Noirez,
Angel Ross

6-4 (1): Laura Harper

TERPS BY STATE/COUNTRY

Kentucky (1): Jade Perry

Maryland (3): Charmaine Carr, Marissa Coleman,
Kalika France

New Jersey (1): Crystal Langhorne

New York (2): Shay Doron, Christie Marrone

Pennsylvania (1): Laura Harper

Tennessee (1): Ashleigh Newman

Virginia (2): Angel Ross, Kristi Toliver

France (1): Aurelie Noirez

PRONUNCIATION GUIDE

Brenda FRESE FREEZE

Joanna BERNABEI BER-nah-bee

CHARMAINE Carr shar-MANE

Shay DORON duh-RON

KALIKA France kah-LEE-kah

AURELIE NOIREZ OR-eh-lee NOR-ez

20
06

MARYLAND

27
SPORTS1
TEAM

RADIO/TV CHART



1

CRYSTAL LANGHORNE

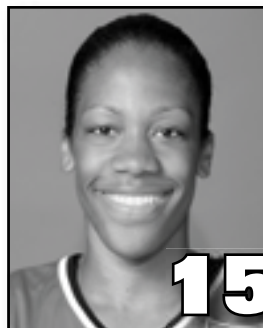
Fr. • C/F • 6-2
Willingboro, N.J.
Willingboro



11

CHRISTIE MARRONE

So. • G • 5-6
Brooklyn, N.Y.
St. John's Villa (Virginia Tech)



15

LAURA HARPER

So. • F/C • 6-4
Elkins Park, Pa.
Cheltenham



20

KRISTI TOLIVER

Fr. • G • 5-7
Harrisonburg, Va.
Harrisonburg



21

ASHLEIGH NEWMAN

So. • G • 5-10
Shelbyville, Tenn.
Shelbyville Central



22

SHAY DORON

Jr. • G • 5-9
Great Neck, N.Y.
Christ the King



24

KALIKA FRANCE

Jr. • G • 5-9
Forestville, Md.
Bishop McNamara



25

MARISSA COLEMAN

Fr. • G/F • 6-1
Cheltenham, Md.
St. John's College (D.C.)



32

CHARMAINE CARR

Jr. • F • 6-1
Accokeek, Md.
Gwynn Park



40

ANGEL ROSS

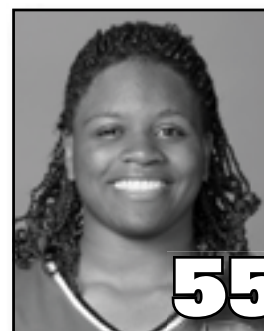
Sr. • F • 6-2
Midlothian, Va.
Midlothian



44

AURELIE NOIREZ

Jr. • C • 6-2
Vandoeuvre, France
Lycee Francois Arago



55

JADE PERRY

So. • F/C • 6-1
Central City, Ky.
Muhlenberg North



BRENDA FRESE

Head Coach
Arizona '93
Fourth Year



JEFF WALZ

Assistant Coach
Northern Kentucky '95
Fourth Year



ERICA FLOYD

Assistant Coach
Ohio State '93
Fourth Year



JOANNA BERNABEI

Assistant Coach
West Liberty '97
Third Year



MARK PEARSON

Director of Basketball
Operations
Iowa State '96
Fourth Year



TAMARA BOWIE

Assistant Director of
Basketball Operations
Ball State '03
Third Year